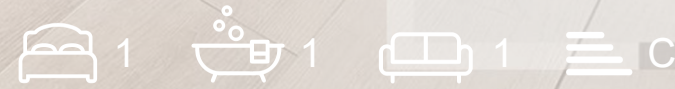
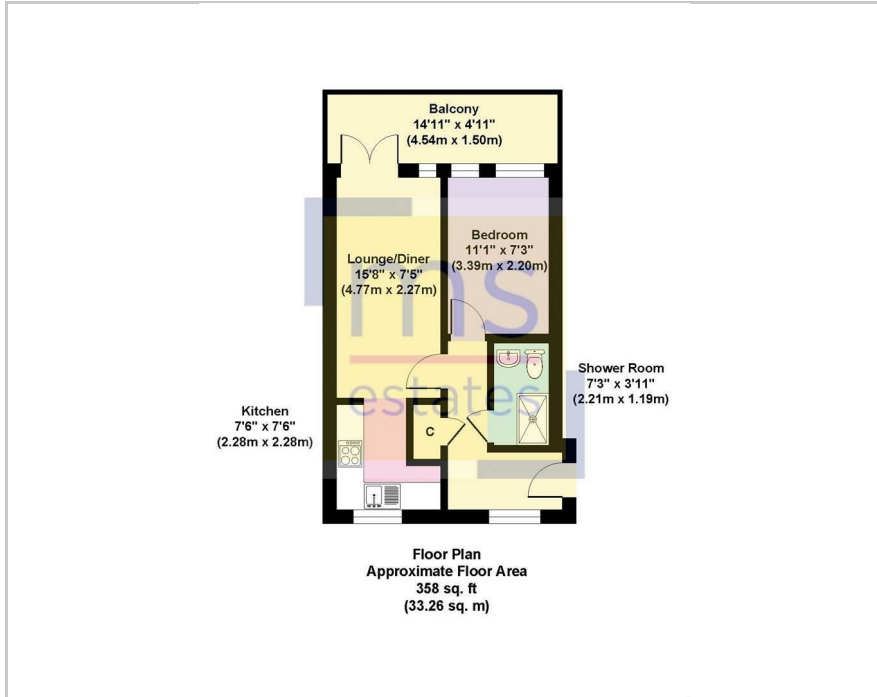




8 The Galeb Leen Court, Nottingham, NG7 2HZ  
£825 Per Month



## Floor Plan



- Newly Refurbished: Freshly decorated with new flooring throughout.
- Steps from QMC: Prime location for healthcare staff or students.
- Allocated Parking: Includes a dedicated off-street parking space.
- New Modern Kitchen: Fully upgraded and ready for use.
- New Shower Room: Sleek, modern, and completely renovated.
- Secure Entry: Peace of mind with a controlled access system.
- Double Glazed: Energy-efficient windows for warmth and quiet.
- Unfurnished: A clean slate to make your own.
- ARLA Registered Agent.



## Area Map



### Energy Efficiency Rating

	Current	Potential
Very energy efficient - lower running costs		
(92 plus) <b>A</b>		
(81-91) <b>B</b>		
(69-80) <b>C</b>		
(55-68) <b>D</b>		
(39-54) <b>E</b>		
(21-38) <b>F</b>		
(1-20) <b>G</b>		
Not energy efficient - higher running costs		
<b>England &amp; Wales</b>	EU Directive 2002/91/EC	

These particulars, whilst believed to be accurate are set out as a general outline only for guidance and do not constitute any part of an offer or contract. Intending purchasers should not rely on them as statements of representation of fact, but must satisfy themselves by inspection or otherwise as to their accuracy. No person in this firm's employment has the authority to make or give any representation or warranty in respect of the property.

3 Park Street, Derby Road, Lenton, Nottingham, NG7 1RR

Tel: 0115 9120061 Email: mail@ms-estates.co.uk www.ms-estates.co.uk